

NELSON MANDELA UNIVERSITY



SCHOOL OF CLINICAL CARE AND MEDICINAL SCIENCES

Departments

- Emergency Medical Care (EMC)
- Medical Laboratory Science
- Nursing Science
- Pharmacy
- Radiography

Clinical training: Experience and instruction in providing direct patient care in a healthcare or related setting



Emergency Medical Care (BEMC)

<https://emc.mandela.ac.za/>

- “A tough but rewarding career, providing emergency medical care and rescue services to those most in need”
- Catering to the critically ill and injured patient, graduates (registered **Emergency Care Practitioners**) practice evidence-based prehospital care, undertake and support medical rescue, and drive best practice medical care in their environment



Emergency Medical Care

Theoretical and austere high fidelity practical lectures, underpinned by work-integrated learning in:

- Intensive Care Units (ICUs) - adult, paediatric, neonatal, neurological and cardiac
- Accident and emergency units
- Obstetric and gynaecological units
- Clinics and primary health care
- Surgical theatres
- Pre-hospital emergency medical services

Resilience

Medical Laboratory Science (BHSc: MLS)

<https://mls.mandela.ac.za/>

Medical laboratory scientists are employed in laboratory diagnostic services and are able to successfully undertake research

... by identifying the nature of an illness and infectious microorganisms that may be responsible for the patient's disease, by the analysis of blood, urine, tissues samples and other bodily fluids

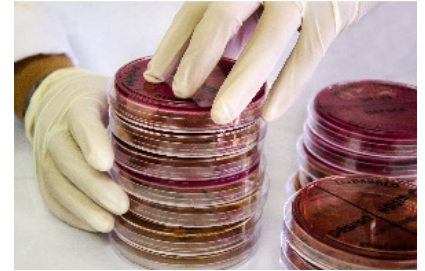


Main disciplines of MLS

- Clinical Chemistry
- Cytology
- Haematology
- Histology
- Microbiology

Analytical

Clinical Practice is undertaken at accredited training laboratories in the Eastern Cape



Nursing Science (BoN)

<https://nursing.mandela.ac.za/>

... a profession for the caring of people – the current pandemic is an illustration of the important role of nursing practitioners

Nursing Science programmes are designed so that graduates are independent and safe practitioners who are practicing in a sensitive manner towards humankind



Nursing Science

- Different areas of specialisation:
 - General nursing science
 - Primary health care
 - Mental health care
 - Midwifery
- Up-to-date technology - theory and practical skills
- Students are registered with the South African Nursing Council (SANC)
- Phasing out BCur, new programme introduced
- 4 year qualification (5 years for extended programme)

Caring

Pharmacy (BPharm)

<https://pharmacy.mandela.ac.za/>

- **Pharmacists** are experts in medicine
- Design, develop, formulate, manufacture and distribute medicines, and are vital members of the healthcare team
- Pharmaceutical care (taking responsibility for a patient's medicine-related needs, and is held accountable for this commitment)
- Clinical pharmacy



Pharmacy

Six (6) years to become a pharmacist:

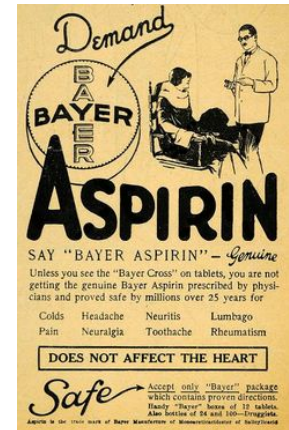
- Four years full-time BPharm degree
- One year internship
- One year community service

Registration as pharmacist with the South African Pharmacy Council (SAPC)

Career prospects

- Community (retail) pharmacies
- Hospital pharmacies
- Pharmaceutical manufacturing/industry
- Universities, medical aids, researchers

Scientific and patient-centered



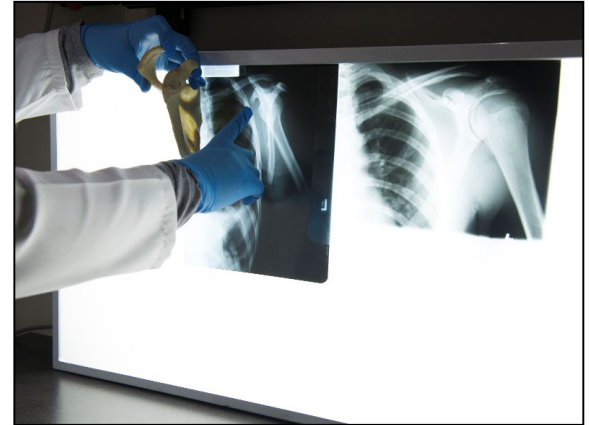
Radiography (BRad)

<https://radiography.mandela.ac.za/>

Diagnostic Radiography

Diagnostic radiographers are

- Vital members of the healthcare team
- Produce high quality radiographic images to assist medical specialists/practitioners to describe, diagnose, monitor and treat a patient's illness and injury



Radiography

Diagnostic radiographers require a technological and scientific background to understand and use highly advanced radiographic equipment

An exciting and rewarding profession if you are interested in the human body, technology and have excellent interpersonal skills



**Technology &
interpersonal skills**

“The very first step towards success in any occupation is to become interested in it”

Sir William Osler
(1849-1919)

Change the World

mandela.ac.za